



### Site Last Updated

Sunday, June 7, 2015

### Navigation

- [Sargent Plane History](#)
- [Sargent Planes By Number](#)
- [Production Dates](#)
- [Sargent Plane Type Study](#)
- [Sargent Price Guide](#)
- [Sargent Plane Catalogues](#)
- [Sargent Plane Brochures](#)
- [Sargent Advertisements](#)
- [Sargent Planes For Sale](#)
- [Sargent Planes Forum](#)

### Recent Additions

- [Sargent No. 1080 Combination Plane \(Stanley Made\)](#)
- [Prototype Dado Plane](#)
- [Little Shaver Block Plane](#)
- [Sargent No. 6408 Smooth Plane](#)
- [Sargent No. 5607 Low Angle Knuckle Joint Block Plane](#)
- [Sargent No. 5217 Block Plane](#)
- [Sargent No. 5206 All-Steel Low Angle Block Plane](#)
- [Sargent No. 4307 Knuckle Joint Block Plane](#)
- [Sargent No. 4306 Knuckle Joint Block Plane](#)
- [Sargent No. 4206 All-Steel Low Angle Block Plane](#)

### Other Information

- [Sargent Plane Information](#)
- [Sargent Plane Advertisements](#)
- [Sargent Planes By Number](#)

### Sargent Planes On eBay



**Trustworthy 804 Marked Solid Back Lever Cap Made by Sargent 1 Wide**

**\$7.95**

Time Remaining: 7h 58m



**Sargent No 409 or No 414 Lever Cap 2 Wide Marked 409 414**

**\$8.95**

Time Remaining: 7h 58m



**Clean Vintage Sargent No 107 block Plane**

**\$7.50**

Time Remaining: 10h 49m



**SARGENT CONo707 C AUTOSET PLANE RARE**

**\$1,200.00**

Time Remaining: 11h 26m



**Sargent VBM adjustable iron scraper plane 42**

**\$120.00**

Time Remaining: 11h 56m



**ANTIQUE SARGENT WOOD PLANE WITH BLADE**

**\$39.99**

Time Remaining: 12h 21m

## Sargent Plane Type Study

Below is a brief type study for Sargent Planes. I will expand and add more to this study over time, so please be patient.

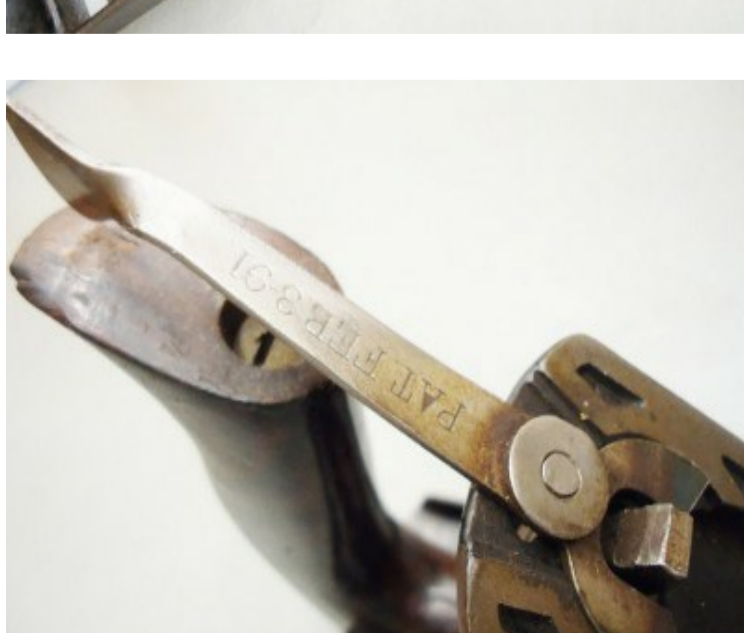
Basically speaking, Types 1, 2 & 3 had the number (or numbers) cast into the backside of the lever caps, A dot was also cast on the back. Often numbers were also cast into the back of the frogs, as seen on some of the examples below. The Type 1 was a pre-lateral plane, and Types 2 & 3 had the horse-shoe shaped pivot for the lateral adjustment and thinner body castings than later planes.

### Type Study - Frogs

#### Sargent Type 1 prelateral style frogs.



#### Sargent Types 2 & 3 "horse-shoe" style frogs.



#### Sargent later style frogs.





### Type Study - Lever Caps

Many thanks to David Heckel for the following information.

#### TYPE STUDY OF TRADEMARKS ON LEVER CAPS

**TYPE 1 1887 - 1901**

Type 1 lever caps have the plane number on the backside, along with a dot.

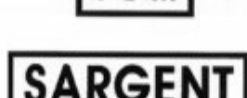
**TYPE 2 1902 - 1909**

Type 2 lever caps either have the plane number on the backside, along with a dot, or just the number.

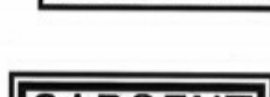
**TYPE 3 1910 - 1918**



**TYPE 4 1919 - 1942**



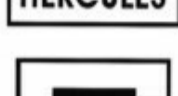
**TYPE 5 1942 - 1950**



**TYPE 6 1950 - 1953**



**TYPE 7 1955 - 1960**



### Type Study - Cutters

Again, many thanks to David Heckel for the following information.

#### TYPE STUDY OF TRADEMARKS ON CUTTERS

**TYPE 1 1887 - 1901**



**TYPE 2 1902 - 1909**



**TYPE 3 1910 - 1918**



**TYPE 4 1919 - 1942**



**TYPE 5 1942 - 1950**



**TYPE 6 1950 - 1953**



**TYPE 7 1955 - 1960**



There are two other cutter markings similar to Type 5, however these do not have the plane model number marked on them, and instead have "NEW HAVEN CONN" either above or below the rectangle. **NOTE:** The "U.S.A." still appears below the rectangle on these planes.

### Sargent Corrugated Planes

A plane with "C" after the model number just means that the sole, or bottom of the plane, is corrugated. However, there are certain "corrugations" that leave some people a little perplexed - a couple of examples of which are shown below. These aren't actually corrugations, as such, merely just the type of finish on the castings. In fact these are actually just milling marks - as in marks left over from milling the sole or sides of the plane in question. Most planes are then placed on a belt sander/linisher to remove the milling marks, then lapped using finer grits. These planes have been basically left 'as-is', with limited, if any, final finishing.



**Milling marks on the sole of a Sargent #707 smooth plane**



**A cheaper Sargent-made "Craftsman Brand" plane made for Sears, showing corrugated milling marks.**

### Sargent Planes on eBay right now...



#### Trustworthy 804 Marked Solid Back Lever Cap Made by Sargent 1 Wide



\$7.95  
Time Remaining: 7h 58m  
Buy It Now for only: \$7.95

#### Sargent No 409 or No 414 Lever Cap 2 Wide Marked 409 414



\$8.95  
Time Remaining: 7h 58m  
Buy It Now for only: \$8.95

#### Clean Vintage Sargent No 107 block Plane



\$7.50  
Time Remaining: 10h 49m  
Buy It Now for only: \$21.00

#### SARGENT CONo707 C AUTOSET PLANE RARE



\$1,200.00  
Time Remaining: 11h 26m  
Buy It Now for only: \$1,200.00

#### Sargent VBM adjustable iron scraper plane 42



\$120.00

Time Remaining: 11h 56m

Buy It Now for only: \$120.00

**ANTIQUE SARGENT WOOD PLANE WITH BLADE**



\$39.99

Time Remaining: 12h 21m

Buy It Now for only: \$59.99

Filed under: [Sargent Plane Information.](#)

Type here to search...

Search



The Sargent Planes Forum



**Most Popular Pages**

Sargent Planes By Number



Welcome To The Sargent Planes Page

Sargent Planes Price Guide

Sargent Plane Type Study

Production Dates For Sargent Planes

History



Sargent No. 306 Block Plane



Sargent No. 79 Filletster & Rabbet Plane



Sargent No. 1506½ Bull-Nose Filletster Rabbet Plane



Sargent No. 4206 All-Steel Low Angle Block Plane

Copyright © 2008 - 2015 **The Sargent Planes Page**

[Home](#) | [Contact](#) | [Privacy Policy](#) | [Sitemap](#) | [Log in](#)