

J2U - a complete batch runtime system for decentralized systems and z/Linux

HOW CAN IT BE USED?

- ✔ Migration of z/OS batch applications in a decentralized environment without changing JCL also for z/Linux

J2U provides JESx functionality via z/OS in a decentralized environment. In the J2U runtime environment, each available z/OS batch job can be carried out without modification on the new target platform Unix, Linux, z/Linux or Windows (optional).

To this end, J2U interprets the JCL and carries it out according to the same rules used via z/OS. The value contained within the JCL domain logic remains unchanged as a result.

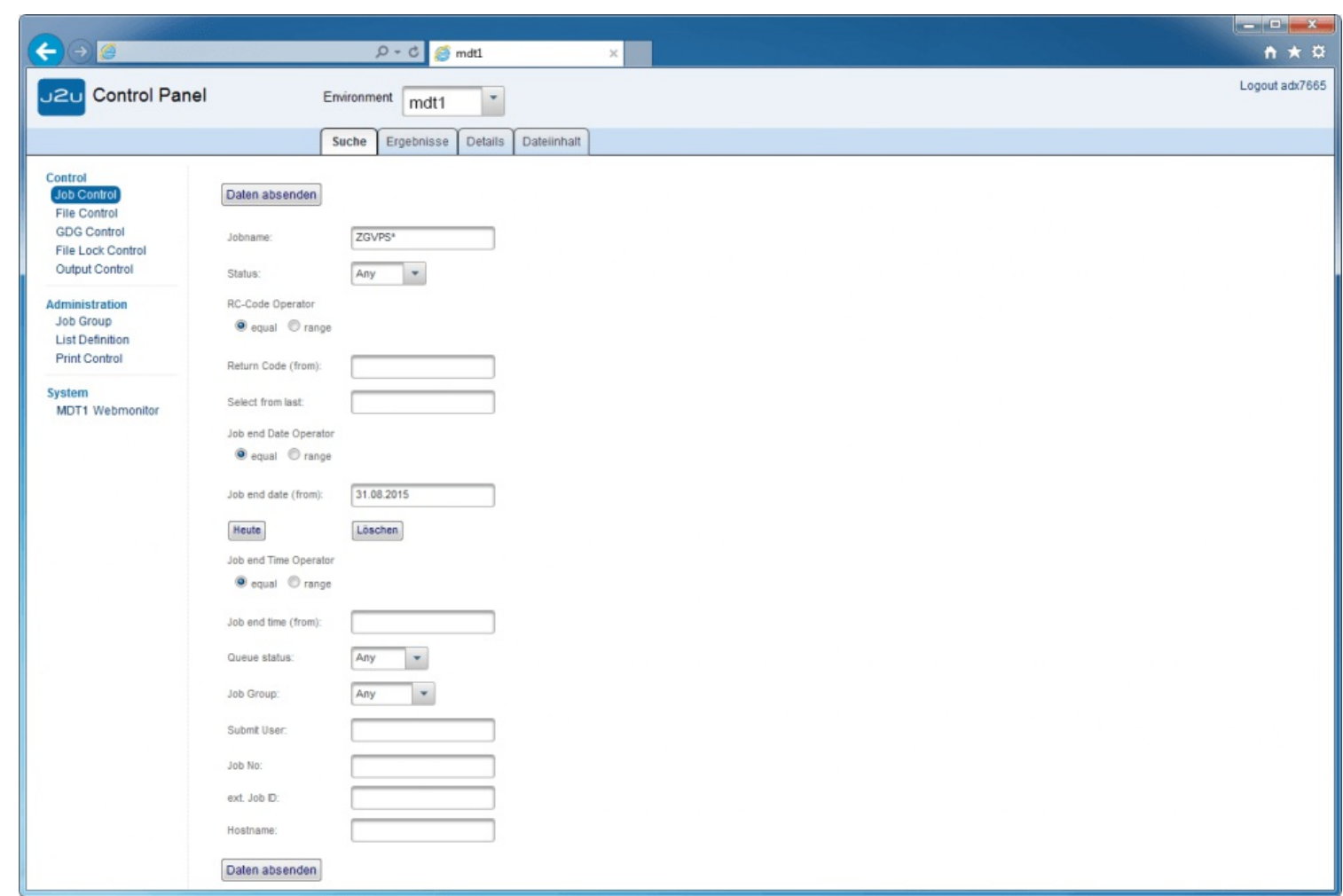
To put it briefly: With J2U, your batch production runs just like before but on a different platform.

- Business-wide batch runtime environment with standards maintained across all platforms

- Cross-platform log and output management

Job Control Search

The Job Control Panel provides access to jobs and the log archive. It contains functions to search through jobs and managing job-log files. The integrated monitoring functions enable the monitoring of jobs in progress. Access is generally via the search page with comprehensive selection criteria for a detailed selection of jobs



(/_wptgn/wp-content/uploads/2015/09/01_j2u_jobcontrol_suche.png)



WHAT BENEFITS DO I HAVE AS A CUSTOMER?

- ✔ Quick, easy, risk-free migration (in part or in full) of batch applications
There are no changes to the domain guidelines governing your batch production such as to the logic and behavior of individual steps within jobs and within job networks. That minimizes the risk and duration of a migration.
- Reduction of expenditure on maintenance of batch applications through business-wide standards
- Unified job, log, and output management of all platforms, meaning lower operational costs
- Cost savings through the replacement of third parties



Technical features
Components, user interface, and further advantages
(<https://www.itgain-is.de/en/mainframemigration/j2u/technische-merkmale/>)



Request trial license
Order J2U for a trial.
(<https://www.itgain-is.de/en/triallicense/>)



Technische Beratung
Phone +49 (0) 511 5151 3700,
email more.about@itgain.de
(<mailto:more.about@itgain.de>)

PERFORMANCE MONITORING

(/performance-monitoring/)

SQLReplayer (<https://www.itgain-is.de/en/performance-monitoring/sql-replayer/>)

Speedgain for DB2 (<https://www.itgain-is.de/en/performance-monitoring/speedgain-for-db2/>)

Speedgain for Oracle (<https://www.itgain-is.de/en/performance-monitoring/speedgain-for-oracle/>)

Speedgain for BigSQL (<https://www.itgain-is.de/en/performance-monitoring/speedgain-for-bigsql/>)

Speedgain for Datastage (<https://www.itgain-is.de/en/performance-monitoring/speedgain-for-datastage/>)

ITGAIN INTEGRATION SOLUTION

Company (<https://www.itgain-is.de/en/company/>)

Contact (<https://www.itgain-is.de/en/kontakt/>)

Login Customers (<http://download.itgain.de>)

ENG

DE (<https://www.itgain-is.de/mainframemigration/j2u/>)

PARTNERS & NETWORKS



GET IN TOUCH WITH US

Get in touch with us. Our experts are always available to offer you their know-how.

GET IN TOUCH

(/mainframemigration/)

[J2U \(https://www.itgain-is.de/en/mainframemigration/j2u/\)](https://www.itgain-is.de/en/mainframemigration/j2u/)

[TRX \(https://www.itgain-is.de/en/mainframemigration/trx/\)](https://www.itgain-is.de/en/mainframemigration/trx/)

[IMS Toolset \(https://www.itgain-is.de/en/mainframemigration/ims/\)](https://www.itgain-is.de/en/mainframemigration/ims/)

[CM Toolset \(https://www.itgain-is.de/en/mainframemigration/cm/\)](https://www.itgain-is.de/en/mainframemigration/cm/)

[sort \(https://www.itgain-is.de/en/mainframemigration/sort/\)](https://www.itgain-is.de/en/mainframemigration/sort/)