

MOST VIRAL IMAGES

sorted by popularity



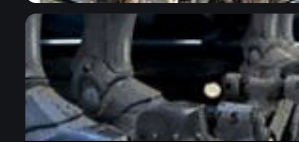
Distribution of results of the Matura (high school exit exam) in Poland in



You Beta Believe It! Favorite Folders Are in Testing



It's real



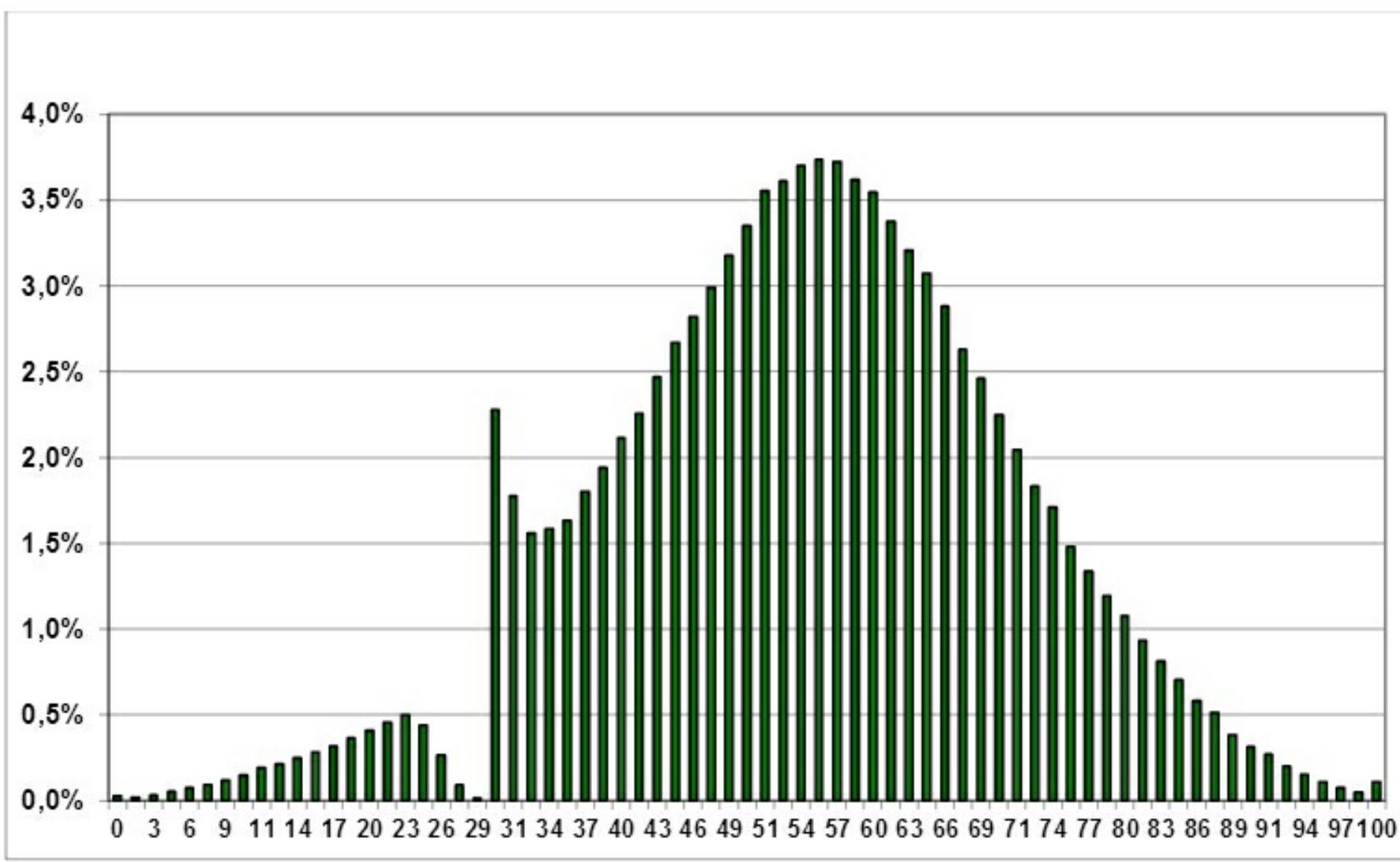
Some slightly offensive OC (first gif)

Distribution of results of the Matura (high school exit exam) in Poland in 2013. The minimum score to pass is 30%.

(source) Jun 5 2014

Next Post >

2.1. Poziom podstawowy



3,091 Points 1,157 Views

Write a comment

remember the community rules

140

Post

383 COMMENTS

Expand All

Best

- IDontKnowStephenFry** 1,575 pts Jun 5 2014

"Ah, fuck it. Let's give them 30%"

6 replies
- RaptorBreath** 1,728 pts Jun 5 2014

I feel for that one dude with a 29

12 replies
- Kuchington** 578 pts Jun 5 2014

I'll be well informed the next time someone asks me about the distribution of the 2013 Poziom Podstawowy.

5 replies
- scottishduck** 457 pts Jun 5 2014

some things fucky.gif

6 replies
- Cassiraa** 97 pts Jun 5 2014

That cute little spike at 100

3 replies
- deediegraphitii** 201 pts Jun 5 2014

Poland, getting the job done. But just barely.

4 replies
- MsMinty** 210 pts Jun 5 2014

It's partially because whoever gets 29 will object and demand reevaluation; very often there's a lost point found. The rest is pity...

5 replies
- IMakeLotsOfReferencesAndRemakes** 92 pts Jun 5 2014

<http://i.imgur.com/pfmCpU9.gif>
- dwkindig** 34 pts Jun 5 2014

So if you score 23 or lower, no one gives a fuck, but 24 or higher and they'll be inclined to fudge your score up to 30.
- Cisforstupidthatsgoodenoughforme** 12 pts Jun 5 2014

Well at least they didn't let all of them pass...
- sonson** 17 pts Jun 5 2014

30% !?!?!?

6 replies
- zirwin** 9 pts Jun 5 2014

suspicious bell curve is suspicious
- aycontact** 9 pts Jun 5 2014

Polish students score in the top 10 in the world in PISA tests. USA students - below average.
- stresseddesserts** 9 pts Jun 5 2014

so...this is good? bad? someone tell me.

3 replies
- HauldrenCollider** 5 pts Jun 6 2014

That's a surprisingly clean normal distribution other than the 30% of course the uptick at 100 is because it is bounded
- noctevena** 15 pts Jun 5 2014

Some axis labeling would be helpful. At first I thought no one got over 4%...

2 replies
- chaotickitten7** 4 pts Jun 5 2014

This is actually a very hard exam. That 30 is more like a 70 compared to regular exams.
- lavitaebella** 6 pts Jun 5 2014

One of the benefits that my parents left Poland is that I didn't have to do this exam. It's freaking hard!

2 replies
- PolakNaZubr** 5 pts Jun 5 2014

Kurwa!
- virtuallyreal** 3 pts Jun 5 2014

This is actually beautiful data. Such cool influences on the distribution.

Love Imgur? Join our team!

- about
- store
- help
- blog
- terms
- privacy
- apps
- api
- advertise
- ad choices
- report ad
- request deletion
- community rules
- forum