



Conversation



K. Ryabitsev-Prime ... m... 2 hours ago 🌐

[mirrors.kernel.org](#) is down because it threw 2 disks in a RAID-6 array and then ground itself to a halt. I'm trying to resuscitate it. Please use [mirrors.edge.kernel.org](#) (it's pointing at our only remaining server that is now up, in Amsterdam).

We need more redundancy for these systems. After exiting Equinix, we are reduced to just 2 nodes (and hence, we're now down to 1 until I rebuild the RAID array on the one that's currently offline).

If you can donate us a server with at least 70TB of space and lots of bandwidth, I'd like to hear from you, but it has to come with hosting, as we don't have any physical datacentres any more and must rely on the kindness of strangers to host them.

↩ 6 ↻ 99 ☆ 42



Luis Villa [luis_in_brief@s...](#) 1 hour ago 🌐

↩ Reply to [@monsieuricon](#)

[@monsieuricon](#) a quarter-billion dollar a year revenue, non-public-benefit, organization is asking for free hosting?

↩ 2 ↻ 0 ☆ 0

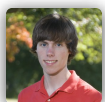


K. Ryabitsev-Prime 🍁 m... 1 hour ago 🇺🇸

↩ Reply to [@luis_in_brief@social.coop](#)

[@luis_in_brief](#) [kernel.org](#) is a charitable organization and [mirrors.kernel.org](#) is a community service that falls outside of the main scope of [kernel.org](#) duties.

↩ 0 ↻ 0 ☆ 3



Palmer Dabbelt [palmer](#) 1 hour ago 🌐

↩ Reply to [@monsieuricon](#)

[@monsieuricon](#) how much bandwidth is

About social.kernel.org

Terms of service

1. Please do not use this service in violation of the [Linux Kernel Code of Conduct](#). Doing so will result in your account suspension with the referral of the matter to the CoC committee.
2. "Repeating"/"boosting" someone else's status on this platform will be treated as endorsement and will fall under rule #1.
3. You are encouraged to use this platform to promote your work on the Linux Kernel, but there is no restriction on permitted topics (with the exception of anything covered by #1 above).
4. There is no requirement to post in English, but it should be considered the primary language of communication on this platform.

Privacy notice

The admins of this service have access to all posted statuses. They aren't looking, but if it's something they shouldn't know about, then you should not post it on this platform.

Please see the [Linux Foundation Privacy Policy](#), which applies to this platform as well.

Getting your own account

If you would like an account on this instance, please check that the following applies to you:

- You are listed in [MAINTAINERS](#) or [CREDITS](#)
- OR: You have a [kernel.org](#) account or email address
- OR: You have a long and established history of involvement with the Linux Kernel

If the above is true and you agree with the *Terms of Service* and *Privacy Notice* listed above, please use these instructions to request an account:

- [How to request an account on social.kernel.org](#)